



# Experimental Biomechanical study on the consequences of dashboard injury of the pelvis after total hip replacement

Kálmán Rácz<sup>1</sup> · Gábor Simon<sup>2</sup> · Gyula Gyórfi<sup>3</sup> · László Kiss<sup>3</sup> · Tamás Bazsó<sup>3</sup> · Loránd Csámer<sup>4</sup> · Tamás Juhász<sup>5</sup> · Péter Attila Gergely<sup>1</sup> · Sándor Manó<sup>4,6</sup>

Received: 5 December 2024 / Accepted: 24 September 2025  
© The Author(s) 2025

## Abstract

Fractures of the pelvic ring and acetabulum are caused by high-energy trauma, usually by traffic accidents. Acetabular fractures occur when a force drives the head of the femur against the acetabulum. As the prevalence of patients living with a total hip prosthesis (THR) increases, the chance of suffering periprosthetic acetabulum fractures also elevates. However, the injury threshold of forces resulting in a periprosthetic acetabular fracture is unknown. The study aimed to analyze the results of a dashboard injury on the acetabulum after total hip replacement through a head-on collision in an ex-vivo experiment. A cemented cup was implanted into hemipelves removed from cadavers, and a dashboard injury was simulated with an impact of a pendulum-like structure released from different heights. The impact energy increased until inflicting acetabular fracture. Eleven hemipelves were examined, of which five were male and six were female. The average force required to cause damage to the pelvis was 5852 N (3950–8386). Isolated acetabular component loosening was noticed with cement fracture in one case (at 5344 N force), acetabular cup loosening occurred combined with posterior column fracture in three cases (at 8386, 3950, 6295 N force), and acetabular cup loosening combined with acetabular floor fracture occurred in six cases (at 4305, 4573, 6531, 4707, 8174, 6117 N force). A combination of all three mechanisms occurred in one case: acetabular cup loosening, with posterior column and acetabular floor fracture at 5986 N force. The results of the ex-vivo experiment indicate that in a dashboard injury, at least around 4000 N force and 4 J impact energy is necessary to create a periacetabular fracture. The results suggest that a larger force is necessary for damage to occur in male pelvises: fractures occurred mostly below 5000 N force in female pelvises, while they occurred above 6000 N in most males.

**Keywords** Forensic pathology · Total hip replacement (THR) · Periprosthetic fracture · Traffic accident · Dashboard injury

✉ Gábor Simon  
gabor.simon@aok.pte.hu

<sup>1</sup> Department of Forensic Medicine, Faculty of Medicine, University of Debrecen, Nagyerdei krt. 98, Debrecen H-4032, Hungary

<sup>2</sup> Department of Forensic Medicine, Medical School, University of Pécs, 12 Szigeti street, Pécs H-7624, Hungary

<sup>3</sup> Department of Orthopaedic Surgery, Faculty of Medicine, University of Debrecen, Nagyerdei krt. 98, Debrecen H-4032, Hungary

<sup>4</sup> Laboratory of Biomechanics, Innovation Ecosystem Centre, University of Debrecen, Vezér u. 37, Debrecen H-4032, Hungary

<sup>5</sup> Department of Anatomy, Histology and Embryology, Faculty of Medicine, University of Debrecen, Nagyerdei krt. 98, Debrecen H-4032, Hungary

<sup>6</sup> Department of Mechanical Engineering, Faculty of Engineering, University of Debrecen, Ötemető u. 2-4, Debrecen H-4028, Hungary

## Introduction

Pelvic fracture constitutes around 3% of overall fractures, but it is associated with high mortality [1] and a high complication rate and often results in inadequate functional outcome [2, 3]. Fractures to the pelvic ring and acetabulum are caused by high-energy trauma, usually by traffic accidents [4]. Approximately 1.19 million people die each year as a result of a traffic accident [5], and 25% of them suffer pelvic fractures [6]. However, the incidence of pelvic fractures is greatly influenced by vehicle safety [7].

Acetabular fractures occur when a force drives the head of the femur against the acetabulum. A typical mechanism is the dashboard injury, where the direct blow to the anterior aspect of the knee due to its impact on the dashboard pushes the femur backward [8]. According to cadaveric experiments, approximately half of the peak force applied to the knee is transmitted to the hip in these types of accidents [9]. Other mechanisms of injury include direct blows to the lateral aspect of the hip during side impact car collisions or falling from height [8]. The role of brake pedal injury in the development of hip injuries also has to be considered as an important mechanism [10, 11].

The acetabulum fractures can be subcategorized, the most common being due to the sitting position with the hips and knees flexed 90 degrees, the postero-superior hip dislocation with posterior acetabular column fracture, or in case the leg was in abduction central hip dislocation with acetabulum floor fracture can occur. It is well documented that during dashboard injury by impact through the flexed knee, due to the force acting longitudinally on the femur, injuries can occur anywhere between the knee and the acetabulum [8, 9, 12].

The number of total hip replacements (THR) performed is rising yearly, reaching more than 300/100.000 population in some developed countries [13–16], so the prevalence of patients living with a THR is increasing. Since most of the patients who underwent THR want to live an active life, including the demand to drive a motor vehicle, the chance of them suffering a traffic accident is rising every year. Several other types of injuries may occur in patients after THR: periprosthetic fractures on the femur [17–19] or any part of the acetabulum [20, 21], loosening of one or more components, hip dislocation [12, 22] or several combinations of these.

Managing periprosthetic fractures is challenging, and these injuries generally have unfavorable outcomes [23]. Periprosthetic acetabulum fractures are rare but occur more frequently due to the increase in patients who underwent THR [24]. Except for a few cases, these injuries require surgery, with weeks of hospitalization and extended rehabilitation. However, scientific literature about these types of fractures is scarce [24]. The factors determining the type of injury, whether it depends on the amount of energy absorbed, the position of the lower limb or the direction of the impacting force, remain unclear. The injury threshold of forces resulting in a periprosthetic acetabular fracture is also unknown.

This study aimed to analyze the results of a dashboard injury on the acetabulum after total hip replacement through a head-on collision in an ex-vivo experiment.

## Materials and methods

The study and publishing the results was approved by the Regional Research Ethic Committee, Debrecen (DE OEC RKEB/IKEB 3312–2011.)

Eleven hemipelvis were removed from the cadavers deceased due to non-traumatic causes and had no pelvic fracture in their medical history. Five cadavers were male, and six were female, with an average age of 68.3 (52–98) years (Table 1). The specimens were removed during the autopsy of the deceased. Body height and body weight were registered prior to the autopsy. The specimens were removed with the help of a mediolateral and horizontal incision in the hip region. After removing the external muscles (gluteal and hip adductors) and internal muscles (iliopsoas group) from the pelvic bone, the femur was separated from the acetabulum by dissecting the hip ligaments. The hemipelvis was removed from the cadaver by transecting the symphysis and the sacroiliac joint. The maximum acetabulum diameter was measured with a digital vernier caliper (Workzone, accuracy: 0.01 m) in a superior to the inferior direction (Table 1). Prior to the experiment, hemipelvis specimens were stored at 4 C. The experiments were performed within 24 h after specimen removal. A cemented cup (Sanatmetal UHMW polyethylene cemented cup) was implanted into all hemipelvis with 45 degrees of abduction and 10 degrees ante-version.

**Table 1** Characteristics of the cadavers

| No.         | 1   | 2   | 3   | 4   | 5   | 6   | 7   | 8   | 9   | 10  | 11  |
|-------------|-----|-----|-----|-----|-----|-----|-----|-----|-----|-----|-----|
| Sex (M/F)   | M   | F   | M   | F   | F   | M   | F   | F   | M   | F   | M   |
| Age (years) | 52  | 59  | 60  | 62  | 64  | 64  | 69  | 73  | 73  | 77  | 98  |
| Height (cm) | 180 | 167 | 181 | 176 | 164 | 178 | 161 | 169 | 178 | 156 | 165 |
| Weight (kg) | 78  | 53  | 82  | 71  | 51  | 75  | 49  | 67  | 77  | 54  | 62  |
| AD (mm)     | 62  | 56  | 62  | 57  | 55  | 61  | 50  | 56  | 63  | 49  | 53  |

AD: maximum acetabulum diameter is measured in a superior to inferior direction

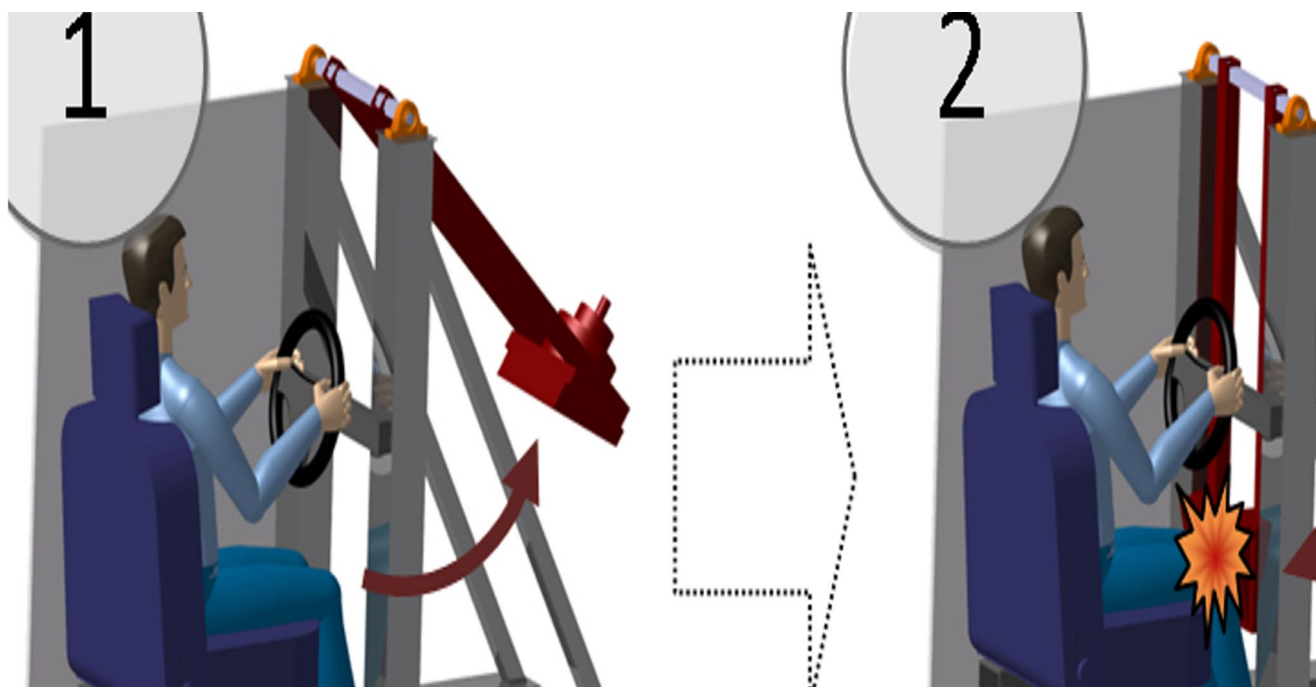


Fig. 1 Schematics of the hitting frame simulating dashboard



Fig. 2 The experimental set up

A hitting frame simulating dashboard injury was developed (Fig. 1). The eleven hemipelvis were fixed with epoxy resin (KEMAPOX Grund 2000, Murexin) to the hitting frame. The femur was simulated with a metal rod that had the proximal part of a femoral component of the prosthesis fixed to it to articulate with the cemented acetabular cup (Fig. 2). To the vertical part of the frame, a pendulum-like structure was fixed that was released from different heights to impact the distal end of the metal rod simulating the femur. The impact occurred in the neutral position of the hip without ab- or adduction. The force of impact could be changed by increasing the angle and weight. The distal end was

fitted with a 2.5 kN load cell (Dynacell, Instron Ltd, High Wycombe, UK) which recorded the force of impact through Instron Max software (Instron Ltd, High Wycombe, UK).

The fixed hemipelvis was examined macroscopically for damage after each impact. The impact energy was increased until visible damage was achieved. The impact energy was increased by increasing the angle the pendulum was dropped from. The angles used were 15, 22, 30, 37, 45 and 52 degrees. If no damage occurred at the largest angle, then the weight of the pendulum was increased. The weight of the pendulum was 15 kg in one case, and 5 kg in all other cases. The angle and height of the pendulum upon release were noted, along with the force of impact required for damage to occur.

## Results

The average force required to cause damage to the pelvis was 5852 N (3950–8386). The smallest angle at which the pendulum was released for damage to occur was 22 degrees, and the largest was 52 degrees. The pendulum release height in these cases was 0.08 m and 0.32 m (Table 2). The loading and unloading of the prosthesis occurred in 15 ms on average.

The following mechanisms of injury occurred: isolated acetabular component loosening was noticed with cement fracture in one case (at 5344 N force), acetabular cup loosening occurred combined with posterior column fracture in three cases (at 8386, 3950, 6295 N force), and acetabular cup loosening combined with acetabular floor fracture

**Table 2** Results of the measurements

| No. | Sex (M/F) | Age (years) | Experiment (no) | Pendulum weight (kg) | Swing angle (°) | Swing height (m) | Energy (J) | Max. Force (N) | Fracture (Y/N) |
|-----|-----------|-------------|-----------------|----------------------|-----------------|------------------|------------|----------------|----------------|
| 1   | M         | 52          | 1/1             | 5                    | 15              | 0,037            | 1,81       | 3249           | no             |
|     |           |             | 1/2             | 5                    | 22              | 0,08             | 3,92       | 3670           | no             |
|     |           |             | 1/3             | 5                    | 37              | 0,222            | 10,89      | 6117           | yes            |
| 2   | F         | 59          | 2/1             | 5                    | 15              | 0,037            | 1,81       | 3473           | no             |
|     |           |             | 2/2             | 5                    | 22              | 0,08             | 3,92       | 5227           | no             |
|     |           |             | 2/3             | 5                    | 37              | 0,222            | 10,89      | 6295           | yes            |
| 3   | M         | 60          | 3/1             | 5                    | 15              | 0,037            | 1,81       | 2731           | no             |
|     |           |             | 3/2             | 5                    | 45              | 0,322            | 15,79      | 6838           | no             |
|     |           |             | 3/3             | 15                   | 30              | 0,147            | 21,63      | 8550           | no             |
|     |           |             | 3/4             | 15                   | 45              | 0,322            | 47,38      | 8386           | yes            |
| 4   | F         | 62          | 4/1             | 5                    | 15              | 0,037            | 1,81       | 3474           | no             |
|     |           |             | 4/2             | 5                    | 22              | 0,08             | 3,92       | 3750           | no             |
|     |           |             | 4/3             | 5                    | 30              | 0,147            | 7,21       | 4278           | no             |
|     |           |             | 4/4             | 5                    | 37              | 0,222            | 10,89      | 4707           | yes            |
| 5   | F         | 64          | 5/1             | 5                    | 15              | 0,037            | 1,81       | 3712           | no             |
|     |           |             | 5/2             | 5                    | 22              | 0,08             | 3,92       | 3958           | no             |
|     |           |             | 5/3             | 5                    | 37              | 0,222            | 10,89      | 5122           | no             |
|     |           |             | 5/4             | 5                    | 45              | 0,322            | 15,79      | 5986           | yes            |
| 6   | M         | 64          | 6/1             | 5                    | 15              | 0,037            | 1,81       | 2826           | no             |
|     |           |             | 6/2             | 5                    | 22              | 0,08             | 3,92       | 5344           | yes            |
| 7   | F         | 69          | 7/1             | 5                    | 15              | 0,037            | 1,81       | 2901           | no             |
|     |           |             | 7/2             | 5                    | 22              | 0,08             | 3,92       | 3822           | no             |
|     |           |             | 7/3             | 5                    | 30              | 0,147            | 7,21       | 4305           | yes            |
| 8   | F         | 73          | 8/1             | 5                    | 15              | 0,037            | 1,81       | 2453           | no             |
|     |           |             | 8/4             | 5                    | 30              | 0,147            | 7,21       | 4573           | yes            |
| 9   | M         | 73          | 9/1             | 5                    | 15              | 0,037            | 1,81       | 2851           | no             |
|     |           |             | 9/2             | 5                    | 37              | 0,222            | 10,89      | 6884           | no             |
|     |           |             | 9/3             | 5                    | 45              | 0,322            | 15,79      | 8957           | no             |
|     |           |             | 9/4             | 5                    | 52              | 0,423            | 20,75      | 8174           | yes            |
| 10  | F         | 77          | 10/1            | 5                    | 15              | 0,037            | 1,81       | 2119           | no             |
|     |           |             | 10/2            | 5                    | 22              | 0,08             | 3,92       | 3950           | yes            |
| 11  | M         | 98          | 11/1            | 5                    | 30              | 0,147            | 7,21       | 4043           | no             |
|     |           |             | 11/2            | 5                    | 45              | 0,322            | 15,79      | 6531           | yes            |

occurred in six cases (at 4305, 4573, 6531, 4707, 8174, 6117 N force). A combination of all three mechanisms occurred in one case, which is acetabular cup loosening, with posterior column and acetabular floor fracture at 5986 N force (Fig. 3).

In the case of two hemipelvis, the maximal recorded energy at the last impact (3/4 and 9/4) was lower than in the case of the previous impact (no. 3/3 and 3/4), which could be explained theoretically that a microfracture invisible macroscopically weakened the bone in the previous impacts (3/3 and 9/3).

## Discussion

Several factors influence the occurrence of acetabular and periprosthetic acetabular fractures. Apart from the mechanism (direction of impact, position of femur) and the impact

energy, individual factors such as sex, age and osteoporosis also have to be considered. The elasticity of the soft tissues and rigidity of the pelvis also influence acetabulum [25] injuries by affecting the energy structures absorb, and the energy absorption potential of the seat is also significant.

Biomechanical studies of fixation methods in acetabular fractures has been previously performed. However, these studies were aimed at evaluating and comparing the different fixation methods applicable in the case of acetabulum fractures under physiological loading [26]. Biomechanical studies are also available about the stability of the implanted acetabular cup [27, 28], but no data is available about the consequences of forces representing high-energy impacts.

The results of our study indicate that in case of dashboard injury, at least around 4000 N force and 4 J impact energy are necessary to create a periacetabular fracture so that these forces can be used as a threshold for injury. Analyzing the results based on gender revealed that a 40% larger

**Fig. 3** Acetabular cup loosening, with posterior column and acetabular floor fracture



force was required for damage to occur in male pelvises. Fractures occurred mostly below 5000 N force in female pelvises, while they occurred above 6000 N in most males. The results suggested that the force required for a fracture decreased with age in female pelvises, but a definite statement on the effect of the age on the threshold of fracture can not be made due to the low number of cases.

It also has to be emphasized, however, that the injury threshold in real-life accidents can be higher since the effect of the musculature, ligaments and connective tissue formation around the replaced hip that occurs in vivo but was not reproducible in our ex vivo experiment also affects the absorbed energy and biomechanical response of the replaced hip to a trauma. The energy absorption potential of external factors (e.g. seat) also has to be considered in a real-life accident.

It is important to emphasize that if trauma occurring in the acetabular region due to deceleration is compared between individuals with and without hip replacement, those with replaced hips are at a greater disadvantage regarding the consequences of the injury. With the exception of isolated hip dislocation, all other injuries occurring in patients with replaced hips due to dashboard injury require surgery [20]. The reconstruction of these hips is technically challenging due to the bone loss and the risk of infection is also increased. Since these accidents often occur in still active, working individuals, the extended rehabilitation following surgical reconstruction can cause severe problems in the lives of these people.

Obtaining more data about the biomechanical behavior of prothetised pelvises in high-energy impacts and determining the threshold of injury will help forensic evaluation of this injury type and also may help to avoid injuries that occurred during our experiment by using the results for improving the safety of vehicles.

### Limitations

The study was only performed on a few specimens; therefore, no statistical analysis could be performed. The average age of the cadavers was 68 years, but that represents well that total hip replacements are mainly installed in the elderly. However, because of the large individual differences in bone strength, especially as osteoporosis affects the given age group extensively, a study involving a larger number of specimens would be needed to draw a more definite conclusion. After performing a well-founded statistical analysis, the bone density measurements must also be included in future studies.

It has to be considered an important limitation that the specimens were exposed to multiple impacts before a visible fracture occurred. It is possible, however, that previous impacts also caused structural injury (microfractures not visible by observation), which could weaken the bone before the next impact. The structural integrity of the specimens should be checked (e.g., with micro-CT) before each impact in future experiments.

During the examination, the hip was in a neutral position, as slight abduction or adduction of the hip can significantly change the mechanism of impact. These different impact mechanisms also have to be examined in the future.

The role of the whole pelvic ring and the soft tissues in the absorption and dissipation of the load is significant and, therefore, can increase the threshold of force which could create a fracture. Due to ethical limitations, only hemipelvis could be used in this study, so future experiments involving these structures would be necessary if ethical permission could be obtained.

## Conclusion

At least around 4000 N force and 4 J impact energy are necessary to create a periacetabular fracture during a dashboard injury to use these forces as a threshold for injury. However, further studies are necessary to analyze the effect of individual differences.

**Author contributions** All authors contributed to the study. Conceptualization: Sándor Manó, Kálmán Rácz; Methodology: Sándor Manó, Lóránd Csámer, Gyula Györfi, László Kiss; Formal analysis and investigation: Kálmán Rácz, Tamás Bazsó, László Kiss; Writing - original draft preparation: Gábor Simon; Writing - review and editing: Kálmán Rácz, Tamás Juhász, Péter Attila Gergely; Supervision: Kálmán Rácz, Péter Attila Gergely, Sándor Manó.

**Funding** Open access funding provided by University of Pécs. The study was founded by the National Research, Development and Innovation Office, Hungary. Grant: National Technology Program, grant identifier: NTPCCRASH. The research was supported by NK-FIHK139396.

**Data Availability** The data is included in the manuscript in Tables 1 and 2. Furthermore, the raw data from the experiment (.xls files with time, displacement and force) is available from authors upon request.

## Declarations

**Consent to publish** Not applicable. No informed consent is required for this type of publication according to the Hungarian Healthcare act of 1997. Not applicable. No informed consent is required for this type of publication according to the Hungarian Healthcare act of 1997.

The study is not a clinical trial.

The study and publishing the results was approved by the Regional Research Ethic Committee, Debrecen. Identifier of ethical permission: DE OEC RKEB/IKEB 3312-2011.

**Competing interest** The authors declare no competing interest.

**Open Access** This article is licensed under a Creative Commons Attribution 4.0 International License, which permits use, sharing, adaptation, distribution and reproduction in any medium or format, as long as you give appropriate credit to the original author(s) and the

source, provide a link to the Creative Commons licence, and indicate if changes were made. The images or other third party material in this article are included in the article's Creative Commons licence, unless indicated otherwise in a credit line to the material. If material is not included in the article's Creative Commons licence and your intended use is not permitted by statutory regulation or exceeds the permitted use, you will need to obtain permission directly from the copyright holder. To view a copy of this licence, visit <http://creativecommons.org/licenses/by/4.0/>.

## References

- Hu S, Guo J, Zhu B, Dong Y, Li F (2023) Epidemiology and burden of pelvic fractures: results from the global burden of disease study. *Injury* 54:589–597. <https://doi.org/10.1016/j.injury.2022.12.007>
- Heimke IM, Pothireddy S, Krebs JC, Breslin MA, Vallier HA (2022) Functional outcomes more than 5 years following acetabulum fracture. *OTA Int* 5:e173. <https://doi.org/10.1097/OI9.000000000000173>
- Dallman J, Ayres J, Nolte J, Everist B, Crist J, Frager L, Sojka J, Malancea R, Heddings A (2024) Acetabular fracture outcomes and complications: an international comparison. *Kans J Med* 2024 17:25–29. <https://doi.org/10.17161/kjm.vol17.21124>
- Basile G, Passeri A, Bove F, Accetta R, Gaudio RM, Calori GM (2022) Pelvic ring and acetabular fracture: concepts of traumatological forensic interest. *Injury* 53:475–480. <https://doi.org/10.1016/j.injury.2021.11.063>
- World Health Organization (2023) Road Traffic Injuries. <https://www.who.int/news-room/fact-sheets/detail/road-traffic-injuries>. Accessed: 26 Nov 2024
- Adams JE, Davis GG, Alexander CB, Alonso JE (2003) Pelvic trauma in rapidly fatal motor vehicle accidents. *J Orthop Trauma* 17:406–410. <https://doi.org/10.1097/00005131-200307000-00003>
- Cuthbert R, Walters S, Ferguson D, Karam E, Ward J, Arshad H, Culpan P, Bates P (2022) Epidemiology of pelvic and acetabular fractures across 12-mo at a level-1 trauma centre. *World J Orthop* 13:744–752. <https://doi.org/10.5312/wjo.v13.i8.744>
- Frank CJ, Zacharias J, Garvin KL (1995) Acetabular fractures. *Nebr Med J* 80:118–123
- Rupp JD, Miller CS, Reed MP, Madura NH, Klinich KD, Schneider LW (2008) Characterization of knee-thigh-hip response in frontal impacts using Biomechanical testing and computational simulations. *Stapp Car Crash J* 52:421–474. <https://doi.org/10.4271/2008-22-0017>
- Monma H, Sugita T (2001) Is the mechanism of traumatic posterior dislocation of the hip a brake pedal injury rather than a dashboard injury? *Injury* 32:221–222. [https://doi.org/10.1016/s0020-1383\(00\)00183-2](https://doi.org/10.1016/s0020-1383(00)00183-2)
- Kumar G, Parkinson RW Is the mechanism of traumatic posterior dislocation of the hip a brake pedal injury rather than a dashboard injury? *Injury* 33:548. [https://doi.org/10.1016/s0020-1383\(01\)00210-8](https://doi.org/10.1016/s0020-1383(01)00210-8)
- Dawson-Amoah K, Raszewski J, Duplantier N, Waddell BS (2018) Dislocation of the hip: A review of Types, Causes, and treatment. *Ochsner J* 18:242–252. <https://doi.org/10.31486/toj.17.0079>
- OECD (2021) Hip and knee replacement. Health at a glance 2021: OECD indicators. OECD Publishing, Paris. <https://doi.org/10.1787/8b492d7a-en>
- Maradit Kremers H, Larson DR, Crowson CS, Kremers WK, Washington RE, Steiner CA, Jiranek WA, Berry DJ (2015) Prevalence of total hip and knee replacement in the united States. *J Bone Joint Surg Am* 97:1386–1397. <https://doi.org/10.2106/JBJS.N.01141>

15. Hegde V, Stambough JB, Levine BR, Springer BD (2022) Highlights of the 2022 American joint replacement registry annual report. *Arthroplast Today* 221:101137. <https://doi.org/10.1016/j.artd.2023.101137>
16. Patel I, Nham F, Zalikha AK, El-Othmani MM (2023) Epidemiology of total hip arthroplasty: demographics, comorbidities and outcomes. *Arthroplasty* 5:2. <https://doi.org/10.1186/s42836-022-00156-1>
17. Ricci WM (2015) Periprosthetic femur fractures. *J Ortop Trauma* 29:130–137. <https://doi.org/10.1097/BOT.0000000000000282>
18. Frenzel S, Vécsei V, Negrin L (2015) Periprosthetic femoral fractures—incidence, classification problems and the proposal of a modified classification scheme. *Int Orthop* 39:1909–1920. <https://doi.org/10.1007/s00264-015-2967-4>
19. Fleischman AN, Chen AF (2015) Periprosthetic fractures around the femoral stem: overcoming challenges and avoiding pitfalls. *Ann Transl Med* 3:234. <https://doi.org/10.3978/j.issn.2305-5839.2015.09.32>
20. Beckers G, Djebara AE, Gauthier M, Lubbeke A, Gamulin A, Zingg M, Bastian JD, Hannouche D (2022) Acetabular Peri-Prosthetic Fractures-A narrative review. *Med (Kaunas)* 58:630. <https://doi.org/10.3390/medicina58050630>
21. Pascarella R, Sangiovanni P, Cerbasi S, Fantasia R, Consonni O, Zottola V, Panella A, Moretti B (2018) Periprosthetic acetabular fractures: a new classification proposal. *Injury* 3:S65–S73. <https://doi.org/10.1016/j.injury.2018.09.061>
22. Kunutsor SK, Barrett MC, Beswick AD, Judge A, Blom AW, Wylde V, Whitehouse MR (2019) Risk factors for dislocation after primary total hip replacement: meta-analysis of 125 studies involving approximately five million hip replacements. *Lancet Rheumatol* 1:e111–e121. [https://doi.org/10.1016/s2665-9913\(19\)30045-1](https://doi.org/10.1016/s2665-9913(19)30045-1)
23. Patsiogiannis N, Kanakaris NK, Giannoudis PV (2021) Periprosthetic hip fractures: an update into their management and clinical outcomes. *EFORT Open Rev* 6:75–92. <https://doi.org/10.1302/2058-5241.6.200050>
24. Bartosik M, Mayr E, Culemann U (2024) Periprothetische azetabulumfrakturen: Klassifikationen, therapie und herausforderungen [Periprosthetic acetabular fractures: classifications, treatment and challenges]. *Orthopadie (Heidelb)* 53:773–781. <https://doi.org/10.1007/s00132-024-04549-9>
25. Zusman NL, Woelber E, McKibben NS, Gallacher DM, Thompson AR, Friess DM, El Naga AN, Working ZM (2024) Acetabular fracture pattern is altered by pre-injury sacroiliac joint autofusion. *Eur J Orthop Surg Traumatol* 34:3423–3430. <https://doi.org/10.1007/s00590-023-03588-w>
26. Hinz N, Dehoust J, Münch M, Seide K, Barth T, Schulz AP, Frosch KH, Hartel MJ (2022) Biomechanical analysis of fixation methods in acetabular fractures: a systematic review of test setups. *Eur J Trauma Emerg Surg* 48:3541–3560. <https://doi.org/10.1007/s00068-022-01936-9>
27. Tabata T, Kaku N, Hara K, Tsumura H (2015) Initial stability of cementless acetabular cups: press-fit and screw fixation interaction—an in vitro Biomechanical study. *Eur J Orthop Surg Traumatol* 25:497–502. <https://doi.org/10.1007/s00590-014-1571-4>
28. Yuchen L, Fuyang W, Jiawei Y, Minghao X, Yuan W, Junlei L, Hui X, Dewei Z, Liangliang C (2023) Biomechanical analysis and clinical observation of 3D-printed acetabular prosthesis for the acetabular reconstruction of total hip arthroplasty in Crowe III hip dysplasia. *Front Bioeng Biotechnol* 11:1219745. <https://doi.org/10.3389/fbioe.2023.1219745>

**Publisher's note** Springer Nature remains neutral with regard to jurisdictional claims in published maps and institutional affiliations.